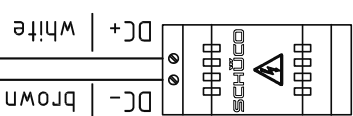
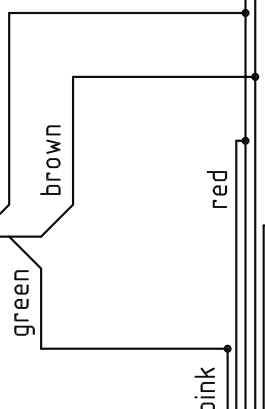
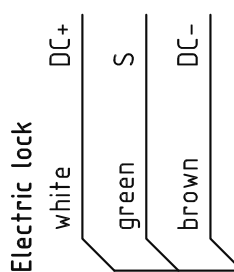
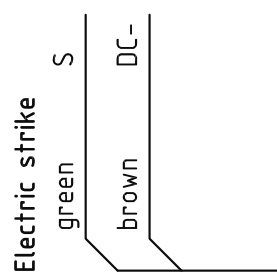
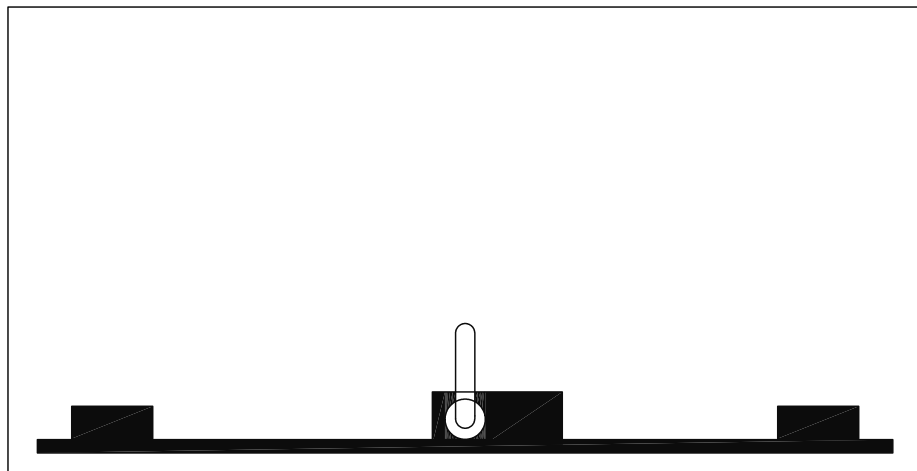


Verkabelungsplan

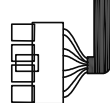
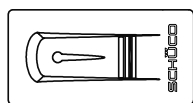
Zugriffskontrolle

E-Key 263 828



DC 12-24 V
(e.g. 263099 DC 24 V / 2 A)

PIN 1	Input	blue
PIN 2	Input	grey
PIN 3	not used	yellow
PIN 4	not used	green
PIN 5	DC -	brown
PIN 6	DC +	white
PIN 7	COMMON	pink
PIN 8	NO / NC	red



Hinweis

Das Austauschen von Beschlagteilen und das Justieren der Tür darf nur durch Fachpersonal erfolgen!
Abbildung ist ähnlich dem Artikel.

Notice: Each unused core must be insulated separately!